



**POWERA ENHANCED
WIRELESS CONTROLLER
FOR NINTENDO SWITCH™
WITH LUMECTRA**



GALACTIC VORTEX

USER MANUAL

TABLE OF CONTENTS

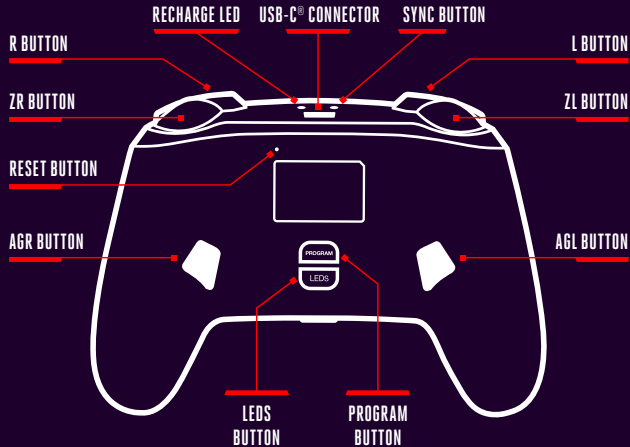
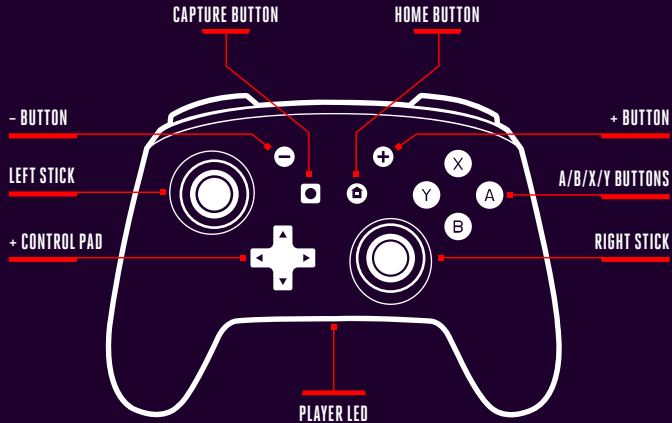


ENGLISH



» CONTROLLER BUTTON MAP.....	3
» PAIRING.....	4
» CHARGING.....	5
» ADVANCED GAMING BUTTONS.....	5
» LUMECTRA LIGHTING.....	6
» SUPPORT.....	13

CONTROLLER BUTTON MAP

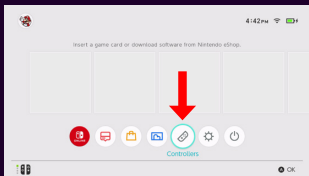


CONTENTS

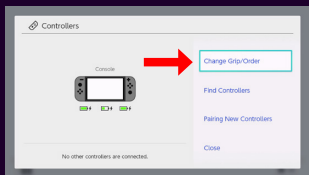
- Enhanced Wireless Controller for Nintendo Switch with Lumetra – Galactic Vortex
- 10 ft. (3 m) USB-A to USB-C Cable
- Quick Start Guide

PAIRING

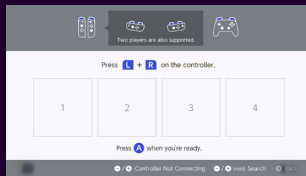
NOTE: Please ensure your Nintendo Switch is using the most recent system update for optimal compatibility with PowerA Wireless controllers. Check your Nintendo Switch system for any updates via "System Settings" on the HOME menu.



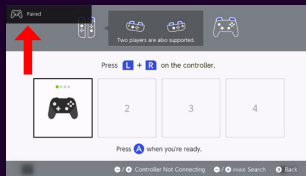
1. Select "Controllers" on the HOME menu.



2. Select "Change Grip/Order"



3. Once on the pairing screen pictured, hold down the SYNC button on the controller for at least three seconds. The player LEDs will cycle from left to right to indicate the controller is in pairing mode.



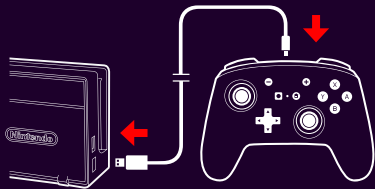
4. A "Paired" message will appear when the controller is connected. Press the A button to end the process.

NOTES:

- **Do not touch the Left Stick or Right Stick when pairing your controller.**
- After the controller is paired with a Nintendo Switch system, it will auto-connect again when the system and controller are powered ON.
- Up to eight wireless controllers can be connected to a Nintendo Switch system at the same time. The maximum number of controllers that can be connected will vary depending on the type of controllers and features that are used.
- A maximum of two wireless controllers can be connected to a Nintendo Switch system while using Bluetooth® audio. To pair additional wireless controllers, disconnect the Bluetooth audio device.
- Pressing the SYNC Button while connected will turn the controller off.
- This controller can be used when the Nintendo Switch is docked or undocked.
- This controller does not support HD rumble, IR camera, or amiibo™ NFC.

CHARGING

1. Connect the provided USB cable to the Nintendo Switch dock and the USB-C end to the wireless controller.
2. The Recharge LED by the USB-C port of the controller will light up red while charging and green when fully charged.



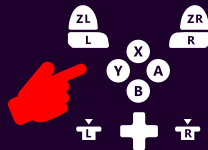
NOTE:

- Charge your controller at least once every 45–60 days (regardless of use) so that the battery retains its ability to charge. Battery capacity will gradually reduce over time with repeated charging.
- When the battery is near depletion the Recharge LED will blink red and the Lumetra lighting will dim.

ADVANCED GAMING BUTTONS

PROGRAMMING

1. Hold the Program Button down for 3 seconds. The Lumetra lighting will slowly blink in white, signaling the controller is in program mode.
2. Press one of the following buttons (A/B/X/Y/L/R/ZL/ZR/Left Stick Press/Right Stick Press/+Control Pad) you wish to assign to an Advanced Gaming Button. The Lumetra lighting will blink quickly.
3. Press the Advanced Gaming Button (AGR or AGL) that you wish to perform that function. The Lumetra lighting on the side of the selected advanced gaming button will blink 3 times, signaling the Advanced Gaming Button has been assigned.
4. Repeat for the remaining Advanced Gaming Button.



NOTE: Advanced Gaming Button assignments will remain in memory even after your controller is disconnected.

RESETTING

1. Hold the program button down for 2 – 3 seconds. The Lumetra lighting will slowly flash, signaling the controller is in program mode.
2. Press either AGL or AGR to individually reset each button or hold down the Program Button for 5 seconds to reset both simultaneously.

LUMECTRA LIGHTING

The Galactic Vortex controller features 6 separate Lumectra lighting modes that you can customize:



COLOR SELECT



LIGHT SPIRAL



SECTOR BURST



ACTIVE MOTION



REACTIVE PULSE



OFF

To switch between each mode, quick-tap the LEDES button. To edit the settings for the selected mode, follow the steps in the next section.



ENTER AND EXIT LUMECTRA PROGRAM MODE

- To enter Lumectra program mode, hold the LEDES button (LEDES) on the back of the controller for 2 seconds.
 - The Lumectra lighting will flash 3 times to indicate the controller is in Lumectra program mode.
- Follow the editing steps in the following sections to adjust the Lumectra settings. Once complete, hold the LEDES button on the back of the controller for 2 seconds to save the Lumectra settings.
 - The Lumectra lighting will flash 3 times to indicate the settings have been saved and the controller is now out of Lumectra program mode.

EDITING LUMECTRA SETTINGS: COLOR SELECT

Color Select mode on the Galactic Vortex controller features 5 customizable zones which can each be set to their own color or mode:



NOTE:

- When moving through the zones, the selected zone will flash 3 times.
- There are 3 lighting modes available per zone: "Solid", "Breathing", or "Cycle".
- Color adjustments only affect "Solid" or "Breathing" modes.
- Speed adjustments only affect "Breathing" or "Cycle" modes. Three speed options are available: slow, medium, and fast.
- Using the all-zone button commands will override individual zone settings.

: SELECT MODE ALL ZONES

: ADJUST SPEED CURRENT ZONE

: INDIVIDUAL ZONE CONTROLS

- : Select Mode
- : Select Zone
- : Increase Brightness
- : Decrease Brightness



: SELECT COLOR ALL ZONES

: ADJUST SPEED ALL ZONES

: INDIVIDUAL ZONE COLOR SELECT

- : Greens
- : Reds
- : Blues
- : Yellows

: INCREASE BRIGHTNESS ALL ZONES

: DECREASE BRIGHTNESS ALL ZONES



EDITING LUMECTRA SETTINGS: LIGHT SPIRAL

Light Spiral mode features a swirling pattern effect that consists of 2 customizable zones which can each be set to their own color or mode:



Spiral



Background

: SELECT MODE ALL ZONES

: ADJUST CYCLE SPEED

: INDIVIDUAL ZONE CONTROLS

- : Select Mode
- : Select Zone
- : Increase Brightness
- : Decrease Brightness

: SELECT COLOR ALL ZONES

: ADJUST SPIRAL MOVEMENT SPEED

: INDIVIDUAL ZONE COLOR SELECT

- : Greens
- : Reds
- : Blues
- : Yellows



NOTE:

- When moving through the zones, the selected zone will flash 3 times.
- There are 2 lighting modes available per zone: "Solid" or "Cycle".
- Three speed options are available: slow, medium, and fast.
- Using the all-zone button commands will override individual zone settings.

: INCREASE BRIGHTNESS ALL ZONES

: DECREASE BRIGHTNESS ALL ZONES



EDITING LUMECTRA SETTINGS: SECTOR BURST

Sector Burst mode features a living galaxy effect with light pulses throughout.

NOTE:

- When entering Lumectra program mode, the whole controller will flash 3 times.
- There are 2 lighting modes available: "Solid" or "Cycle".
- Three speed options are available: slow, medium, and fast.
- There are no zones for this mode.



EDITING LUMECTRA SETTINGS: ACTIVE MOTION

Active Motion mode features a shooting star effect that consists of 2 customizable zones which can each be set to their own color or mode.



Travel Path



Background

: SELECT MODE
ALL ZONES

: ADJUST SPEED
CURRENT ZONE

: INDIVIDUAL
ZONE CONTROLS

- : Select Mode
- : Select Zone
- : Increase Brightness
- : Decrease Brightness

: SELECT COLOR
ALL ZONES

: ADJUST SPEED
ALL ZONES

: INDIVIDUAL ZONE
COLOR SELECT

- Greens
- Reds
- Blues
- Yellows



NOTE:

- When moving through the zones, the selected zone will flash 3 times.
- There are 2 lighting modes available per zone: "Solid" or "Cycle".
- Three speed options are available: slow, medium, and fast.
- Using the all-zone button commands will override individual zone settings.

: INCREASE BRIGHTNESS ALL ZONES

: DECREASE BRIGHTNESS ALL ZONES



EDITING LUMECTRA SETTINGS: REACTIVE PULSE

Reactive Pulse mode features a reactive light effect that sends out bursts of lights from the button that is pressed.

NOTE:

- When entering Lumectra program mode, the whole controller will flash 3 times.
- There are 2 lighting modes available: "Solid" or "Cycle".
- Three speed options are available: slow, medium, and fast.
- There are no zones for this mode.

 : SELECT MODE

 : DECREASE SPEED

 : MODE & BRIGHTNESS CONTROLS

-  : Select Mode
-  : Select Zone
-  : Increase Brightness
-  : Decrease Brightness



 : STATIC COLOR SELECTION

 : INCREASE SPEED

 : STATIC COLOR SELECTION

 : INCREASE BRIGHTNESS ALL ZONES

 : DECREASE BRIGHTNESS ALL ZONES



UNDO LIGHTING EDITS

While in Lumectra program mode, it is possible to undo the changes made by double pressing the LEDS button. This will revert the controller to the last saved Lumectra settings.

CHANGE TO LAST SAVED SETTINGS

The controller saves the 2 most recently saved Lumectra settings. To swap between them, double press the LEDS button when in standard mode.

ADDITIONAL LUMECTRA FEATURES

BATTERY SAVING MODE

By default, the controller will turn the Lumectra lighting off after 5 minutes of inactivity to extend the battery life of the controller. It is possible to disable this mode if preferred.

- Enter Lumectra program mode by holding the LEDS button for 2 seconds.
 - The Lumectra lighting will flash 3 times to indicate the controller is in Lumectra program mode.
- Press in the Left and Right Sticks for 2 seconds.
 - The Lumectra lighting will flash 2 times to indicate battery saving mode has been disabled.
 - The Lumectra lighting will flash 3 times to indicate battery saving mode is enabled.
- Exit Lumectra program mode to save this setting change by holding the LEDS button for 2 seconds.
 - The Lumectra lighting will flash 3 times to indicate the settings have been saved and the controller is now out of Lumectra program mode.

NOTE: Disabling this mode will deplete the battery charge more quickly.

DISPLAY MODE

Display Mode allows you to edit and turn on the Lumectra lighting without needing the controller to be paired to the Nintendo Switch system. To activate display mode, press the LEDS button once when the controller is not connected to turn on the lighting and again to turn them off. Follow the instructions in the previous sections to edit the Lumectra settings.

NOTE:

- Plugging in the provided cable will allow the lights to stay on until the LEDS button is pressed again.
- If the controller is in battery saving mode, the lighting will turn off after 5 minutes. If battery saving mode is disabled, the lighting will stay on until manually turned off.
- It is recommended to use this mode with the cable plugged in to ensure the controller is charged and ready to go when it is time to play.

TROUBLESHOOTING

For latest FAQs and support with your authentic PowerA accessories, please visit [PowerA.com/Support](https://www.powera.com/support).

Q. Why is my wireless controller not pairing?

- Confirm the battery is charged by connecting the controller to the console with the supplied USB-C Cable.
- Confirm you are following the pairing process. The controller can only be paired to one Nintendo Switch system at a time.
- Use a paper clip to press the reset button on the back of the controller and reset the controller to factory settings.

Q. Why are my sticks scrolling/driftng?

- It is important that when the controller is paired or reconnected to the Nintendo Switch system that the sticks are not touched. If this happens, turn the controller off by pressing the SYNC button once, then turning it back on by pressing the HOME button without touching the sticks.
- Make sure the controller battery is not depleted.

Q. Why don't the motion controls work on my controller?

- Make sure that your Nintendo Switch system version is 6.0.1 or later.
- Turn the controller off by pressing the SYNC button once and turn it back on by pressing the HOME button without touching the sticks.

Q. Why is the Lumectra lighting off?

- The brightness may be set to 0% for that mode or zone. Use +Control Pad up or ZR in Lumectra program mode to turn the brightness up for that zone or ZR to turn the brightness up for all zones.
- The controller might be in the off mode. Quick tap the LEDS button to move to the next lighting mode.

WARRANTY

2-Year Limited Warranty: Visit PowerA.com/Support for details.

WARRANTY AGAINST DEFECTS, AUSTRALIA & NEW ZEALAND CUSTOMERS

This product is provided with a 2-year warranty against defects in manufacturing or materials from the date of purchase. ACCO Brands will either repair or replace a faulty or defective product subject to the conditions of this warranty. Claims under this warranty must be made to the place of purchase within the warranty period with proof of purchase by the original purchaser only. Expenses associated with a warranty claim are the responsibility of the consumer. Conditions of this warranty are on our website: PowerA.com/warranty-ANZ

This warranty is provided in addition to other rights or remedies available to you under the law. Our goods come with guarantees that cannot be excluded under the Australian Consumer Law. You are entitled to a replacement or refund for a major failure and compensation for any other reasonably foreseeable loss or damage. You are also entitled to have the goods repaired or replaced if the goods fail to be of acceptable quality and the failure does not amount to a major failure.

DISTRIBUTOR CONTACT DETAILS

AUSTRALIAN CUSTOMERS:

ACCO Brands Australia Pty Ltd, Locked Bag 50
Blacktown BC, NSW 2148
Phone: 1300 278 546
Email: consumer.support@powera.com

NEW ZEALAND CUSTOMERS:

ACCO Brands New Zealand Limited
PO Box 11-677, Ellerslie, Auckland 1542
Phone: 0800 800 526
Email: consumer.support@powera.com

BATTERY WARNING

- Do not attempt to repair the Li-ion battery yourself—you may damage the battery, which could cause overheating, fire, and injury.
- The Li-ion battery in your device should be serviced or recycled by PowerA or an authorized provider and must be recycled or disposed of separately from household waste.
- Dispose of batteries according to your local environmental laws and guidelines.
- Do not use or leave the product containing rechargeable batteries exposed to very high or very low temperature (e.g. at strong direct sunlight or in a vehicle in extremely hot or extremely cold weather), or in an environment

with extremely low air pressure can result in an explosion, fire, or the leakage of flammable liquid or gas.

- Do not use a device containing rechargeable batteries in an environment with high levels of static electricity. Excessive static electricity can impair the batteries' internal safety measures, increasing the risk of overheating or fire.
- If liquid leaking from a battery pack comes into contact with your eyes, DO NOT RUB EYES! Immediately flush eyes thoroughly with clean running water and seek medical attention to prevent injury to eyes.
- If the battery gives off an odor, generates heat, or in any way appears abnormal during use, recharging or storage, immediately remove it from any charging device and place it in a sealed fireproof container such as a metal box, or in a safe location away from people and flammable items.
- Discarded batteries may cause fire. Do not heat the controller or battery, or place either in or near fire.

WARNING: READ BEFORE PLAYING

A very small percentage of individuals experience epileptic seizures when exposed to certain light patterns or flashing lights. Exposure to certain light patterns while playing video games may induce an epileptic seizure in these individuals. Certain conditions may induce previously undetected epileptic symptoms even in persons who have no history of prior seizures of epilepsy. If you, or anyone in your family, have an epileptic condition, consult your physician prior to playing. If you experience any of the following symptoms while playing a video game – dizziness, altered vision, eye or muscle twitches, loss of awareness, disorientation, any involuntary movement, or convulsions – IMMEDIATELY discontinue use and consult with your physician before resuming play.

MOTION WARNING

Playing video games may cause muscle, joint, skin or eyes discomfort. Follow these instructions to avoid problems such as tendinitis, carpal tunnel syndrome, skin irritation or eyestrain:

- Avoid excessive play. Take a 10- to 15-minute break every hour, even if you don't think you need it. Parents should monitor their children for appropriate play.
- If your hands, wrists, arms or eyes become tired or sore while playing, or if you feel symptoms such as tingling, numbness, burning or stiffness, stop and rest for several hours before playing again.
- If you continue to have any of the above symptoms or other discomfort during or after play, stop playing and see a doctor.

COMPLIANCE IDENTIFICATION & SPECIFICATION

MODEL: NSGPWLLG

FCC ID: YFK-NSGPWLLGDA

IC: 9246A-NSGPWLLGDA

RF FREQUENCY: 2.4 – 2.4835 GHz

BATTERY: Lithium-ion, 3.7 V, 1200 mAh, 4.44 Wh

MANUFACTURED FOR

ACCO Brands USA LLC, 4 Corporate Drive, Lake Zurich, IL 60047

ACCOBRANDS.com | POWERA.com | MADE IN CHINA

FCC STATEMENT

This device complies with Part 15 of the FCC Rules. Operation is subject to the following two conditions:

- (1) this device may not cause harmful interference, and
- (2) this device must accept any interference received, including interference that may cause undesired operation.

WARNING: Changes or modifications to this unit not expressly approved by the party responsible for compliance could void the user's authority to operate the equipment.

NOTE: This equipment has been tested and found to comply with the limits for Class B digital device, pursuant to Part 15 of the FCC Rules. These limits are designed to provide reasonable protection against harmful interference in a residential installation. This equipment generates, uses and can radiate radio frequency energy and, if not installed and used in accordance with the instructions, may cause harmful interference to radio communications. However, there is no guarantee that interference will not occur in a particular installation. If this equipment does cause harmful interference to radio or television reception, which can be determined by turning the equipment off and on, the user is encouraged to try to correct the interference by one or more of the following measures:

- Reorient or relocate the receiving antenna.
- Increase the separation between the equipment and receiver.
- Connect the equipment into an outlet on a circuit different from that to which the receiver is connected.
- Consult the dealer or an experienced radio/TV technician for help.

CAN ICES-003(B)/NMB-003(B)

This device contains licence-exempt transmitter(s)/receiver(s) that comply with Innovation, Science and Economic Development Canada's licence-exempt RSS(s). Operation is subject to the following two conditions:

1. This device may not cause interference.
2. This device must accept any interference, including interference that may cause undesired operation of the device.

REGIONAL COMPLIANCE SYMBOLS

More information available via web-search of each symbol name.



Waste Electrical and Electronic Equipment (WEEE): Electrical and electronic devices and batteries contain materials and substances that can have damaging effects on human health and the environment. This symbol indicates that this device and the battery must not be treated as household waste and must be collected separately. Dispose of the device via a collection point for the recycling of waste electrical and electronic equipment within the EU, UK and in other European countries that operate separate collection systems for waste electrical and electronic equipment and batteries. By disposing of the device and the battery in the proper manner, you help to avoid possible hazards for the environment and public health that could otherwise be caused by improper treatment of waste equipment. The recycling of materials contributes to the conservation of natural resources.



Conformit Europepe aka European Conformity (CE): A declaration from the manufacturer that the product meets applicable European Directives and Regulations for health, safety, and environmental protection.



UK Conformity Assessment (UKCA): A declaration from the manufacturer that the product meets applicable UK Regulations for health, safety, and environmental protection.



The **RCM (Regulatory Compliance Mark)** indicates that the product complies with the relevant Australian and New Zealand electrical safety, electromagnetic compatibility (EMC) and related requirements.

EU/UK DECLARATION OF CONFORMITY

Hereby, ACCO Brands USA LLC declares the wireless controller is in compliance with Directive 2014/53/EU and UK Radio Equipment Regulation 2017, as well as other essential requirements and relevant provisions of EU directives and UK legislation. The full text of the declaration of conformity is available at the following internet address:

PowerA.com/compliance

WIRELESS SPECIFICATIONS

Frequency Range: 2.4 – 2.4835 GHz; Max E.I.R.P.: < 10 dBm. For EU & UK only.

ADDITIONAL LEGAL

© 2024 ACCO Brands. All Rights Reserved. PowerA, PowerA Logo, and Lumectra are trademarks of ACCO Brands.

The Bluetooth® word mark and logos are registered trademarks owned by Bluetooth SIG, Inc. and any use of such marks by ACCO Brands is under license. Other trademarks and trade names are those of their respective owners.

USB-C® is a registered trademark of USB Implementers Forum.

© Nintendo. Nintendo Switch is a trademark of Nintendo.



Complies with
IMDA Standards
DB105685



The logo features a stylized circular icon on the left, composed of overlapping curved segments in a rainbow spectrum (red, orange, yellow, green, blue, purple). To the right of this icon, the word "LUMECTRA" is written in a white, uppercase, sans-serif font, followed by a trademark symbol (TM).

LUMECTRA™